

Potential NUCLEAR POWER FACILITY

SMALL MODULAR REACTOR DEVELOPMENT PROJECT ENGAGEMENT

Saskatchewan's power system is changing. It took 90 years to build the power grid we have today. Now, we're planning for the next 90 years. This planning process includes you.

We want to hear from you on two fronts – the potential for nuclear power from small modular reactors (SMR) and on our future supply plan. So far, we've heard from you through online learning sessions, surveys, workshops, a virtual open house and community events.

Here's how you can get involved in the coming weeks and months:

STAGE 2 - FUTURE SUPPLY SURVEY

We want a plan that reflects what's important to Saskatchewan residents. Our engineers need to understand your values and priorities to make this happen. Take five minutes to complete this important survey.



saskpower.com/talkfuturepower

STAGE 2 - FUTURE SUPPLY WORKSHOPS

Join members of our supply planning team, virtually, for an informative and collaborative working session. During these sessions we will:

- Share information about key aspects of the power supply options we're considering such as: cost, emissions, economic and social impacts
- Engage in a discussion about what our priorities should be when planning our ideal power supply mix

Workshops are scheduled for:

- March 27 from 11:30 a.m. – 1:30 p.m.
- March 28 from 11:30 a.m. – 1:30 p.m.
- March 29 from 9 – 11 a.m.
- March 30 from 9 – 11 a.m.

Register today at saskpower.com/engage

ONLINE ENGAGEMENT HUB

At saskpower.com/engage, you can ask questions, share ideas, complete polls, take surveys, and add information to our interactive map. This site will remain active throughout the SMR Development and our Future Supply Planning engagement processes.

Future Supply Plan - 2030 and Beyond

Take 5 minutes to complete a survey

We need to understand your values and priorities to create a power system that works for everyone.

[GET STARTED](#)



Sign up for our newsletter to stay informed

Stay up-to-date on progress and participation opportunities for the Future Supply Plan.

[GET STARTED](#)



Planning for Nuclear Power



Learn about nuclear power from small modular reactors

We're exploring small modular reactors in Saskatchewan and need your help.

[GET STARTED](#)



Share information about the study areas

We're looking to understand more about these study areas. Help us populate the map.

[GET STARTED](#)



Potential NUCLEAR POWER FACILITY

REGIONAL EVALUATION PROCESS

In October 2022, we launched the Regional Evaluation Process (REP). In addition to our public engagement, this process is designed to share information about the project and gather input on regional identity, siting considerations, potential economic development and future public participation preferences to support the project's regulatory and siting process.

The REP consists of two committees – one for each of the two study areas around Estevan and Elbow. The committees include municipalities, regional and stakeholder organizations, academia, non-government organizations and Indigenous organizations. The committees gather for four workshops between December and May. By June we will release a final report summarizing the REP's findings.



The materials we shared during the REP workshops and a full list of committee members can be found at saskpower.com/nuclear.

INDIGENOUS ENGAGEMENT

Our Indigenous engagement initiatives provide opportunities for all Indigenous communities in Saskatchewan to receive project updates and to provide feedback that SaskPower can use to inform its siting decision and other decisions related to this and other projects.

We are continuing to engage with First Nation and Métis leadership to provide updates and gather their feedback on the project and to identify additional opportunities for future engagements, including those at the community level.

For more information, email us at IndigenousRelations@saskpower.com.

DUTY TO CONSULT

Our siting decision for the SMR Development Project has the potential to impact Treaty and Aboriginal rights. SaskPower has a duty to consult and accommodate potentially impacted First Nations and Métis locals. Following our study area announcement, we initiated the formal provincial First Nation and Métis Consultation Policy Framework.

These consultations focus on how rights related to hunting, fishing, trapping and other traditional activities are exercised in the study areas so that project siting will avoid or mitigate potential adverse impacts.

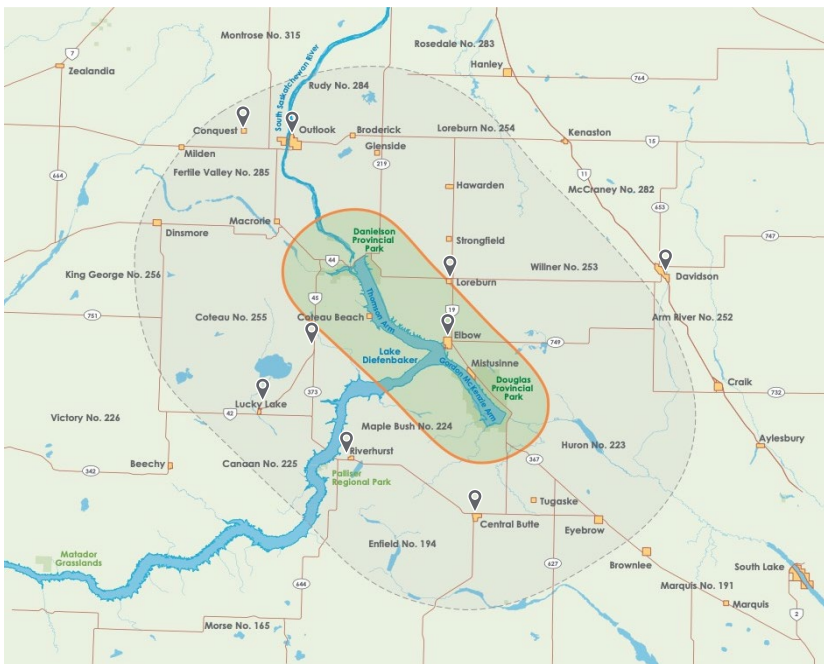
Rightsholders in or near the study area have been sent a notification letter from SaskPower inviting them to the consultation process. Consultations on SaskPower's siting decision are currently underway.



Potential NUCLEAR POWER FACILITY



Stop by one of our drop-in events to learn more about the project and see the latest SMR siting maps. Meet some of the project team, ask your questions and share your priorities to help us narrow options for a potential site.



IN PERSON

March:

28 Riverhurst 12 – 3:00 p.m.
Central Butte 5 – 7:30 p.m.

29 Loreburn 8:30 – 11 a.m.
Elbow 12 – 3 p.m.
Elbow 5 – 7:30 p.m.

30 Davidson 10 a.m. – 1 p.m.

April:

4 Outlook 12 – 3 p.m.
Conquest 5 – 7:30 p.m.

5 Lucky Lake 9 – 11 a.m.
Birsay 1 – 3 p.m.

VIRTUAL

May:

2 12 – 1:30 & 6:30 – 8 p.m.

HOW TO STAY IN TOUCH

Phone: 1-855-566-2161 (toll-free)

Email: PublicEngagement@SaskPower.com

Mail:

SaskPower
Stakeholder Consultation & Public Engagement
9SE -- 2025 Victoria Avenue
Regina, SK
S4P 0S1

JOIN US ONLINE

For more information on the project, visit saskpower.com/nuclear.

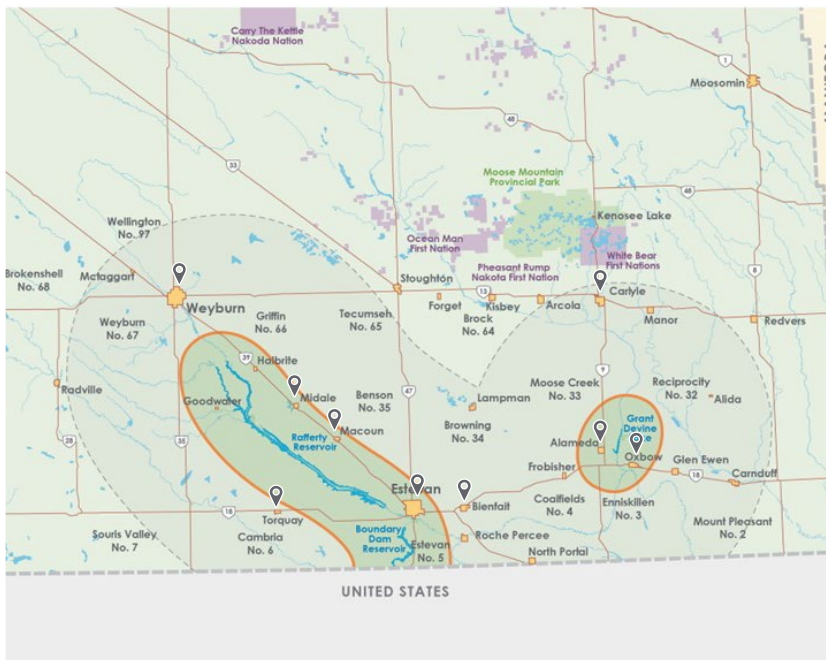
We'd love to hear your input on the project. Share your feedback with us online at saskpower.com/engage.



Potential NUCLEAR POWER FACILITY



Stop by one of our drop-in events to learn more about the project and see the latest SMR siting maps. Meet some of the project team, ask your questions and share your priorities to help us narrow options for a potential site.



IN PERSON

March:

23 Estevan 5 – 7:30 p.m.

24 Estevan 8 – 11:30 a.m.

Bienfait 1 – 3 p.m.

Torquay 4:30 – 7 p.m.

April:

25 Carlyle 9:30 a.m. – 12:00 p.m.

Oxbow 2 p.m. – 4 p.m.

Alameda 5:30 – 8 p.m.

26 Macoun 9 – 11 a.m.

Midale 1 – 3 p.m.

Weyburn 4:30 – 7 p.m.

VIRTUAL

May:

2 12 – 1:30 & 6:30 – 8 p.m.

HOW TO STAY IN TOUCH

Phone: 1-855-566-2161 (toll-free)

Email: PublicEngagement@SaskPower.com

Mail:

SaskPower
Stakeholder Consultation & Public Engagement
9SE -- 2025 Victoria Avenue
Regina, SK
S4P 0S1

JOIN US ONLINE

For more information on the project, visit saskpower.com/nuclear.

We'd love to hear your input on the project. Share your feedback with us online at saskpower.com/engage.

