

Power Generation Partner Program

Priority Location Map

2020

This map provides a view of the 25 kV (kilovolt) distribution feeders identified by SaskPower to be the highest priority for PGPP Project interconnection.

Feeders shown in orange are connected to Priority 1 Feeder - Planned Substations. Projects connecting to one of these may be eligible as a Priority 1 Project.

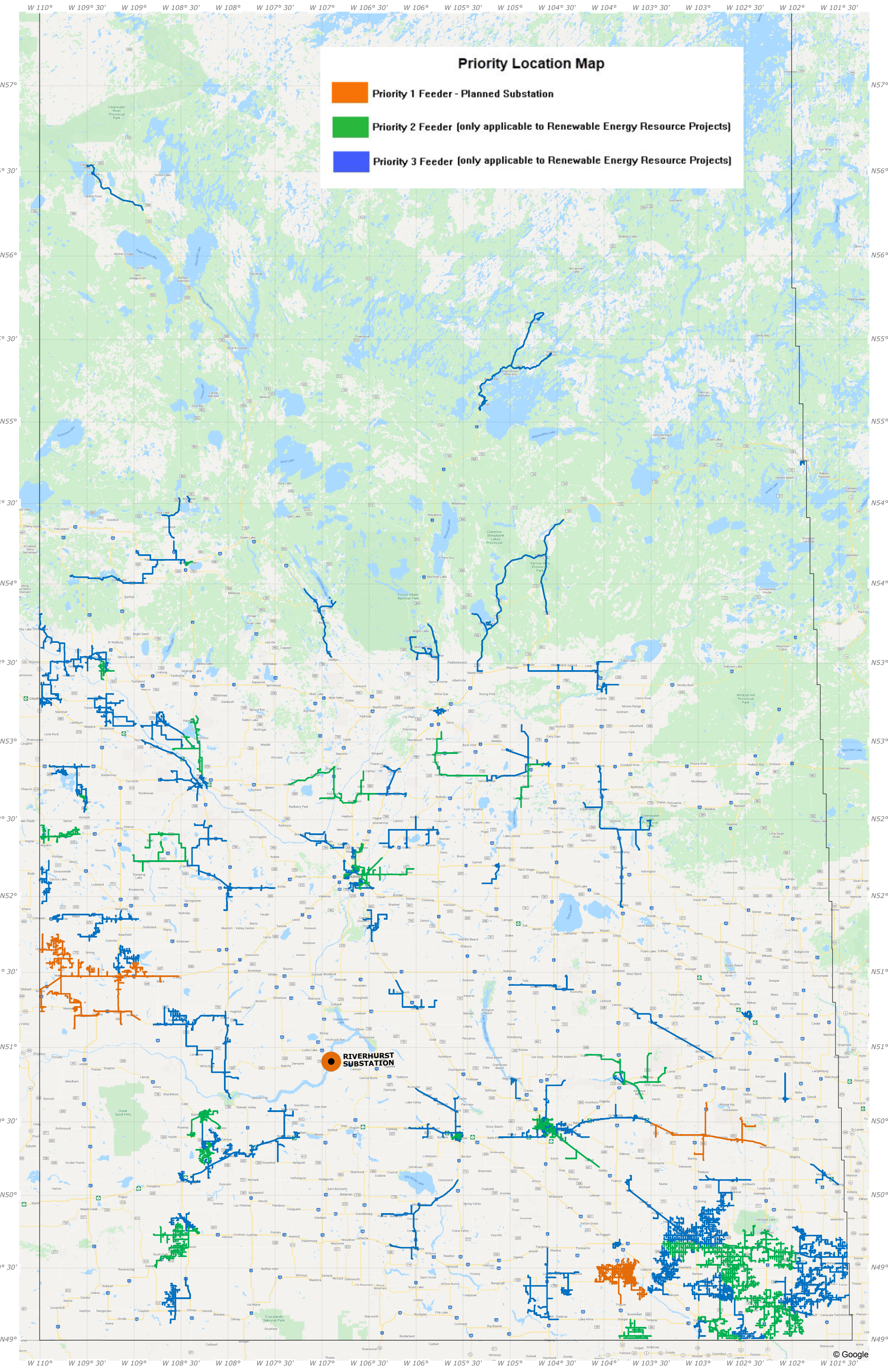
Feeders shown in green are Priority 2 Feeders (only applicable to Renewable Energy Resource Projects).

Feeders shown in blue are Priority 3 Feeders (only applicable to Renewable Energy Resource Projects).

Applications connecting to any feeder not shown on the Map may still be considered as detailed in the Power Generation Partner Program Guidelines .

DISCLAIMER: This map is FOR INFORMATION ONLY and may not be fully accurate.

All applicants are required to request and attend a pre-application meeting with SaskPower to explore the priority level of the feeder(s) available in the area of the Applicant's proposed Project.



Priority 1 Feeder - Planned Substation

Priority 2 Feeder (only applicable to Renewable Energy Resource Projects)

Priority 3 Feeder (only applicable to Renewable Energy Resource Projects)

RIVERHURST SUBSTATION
Larson