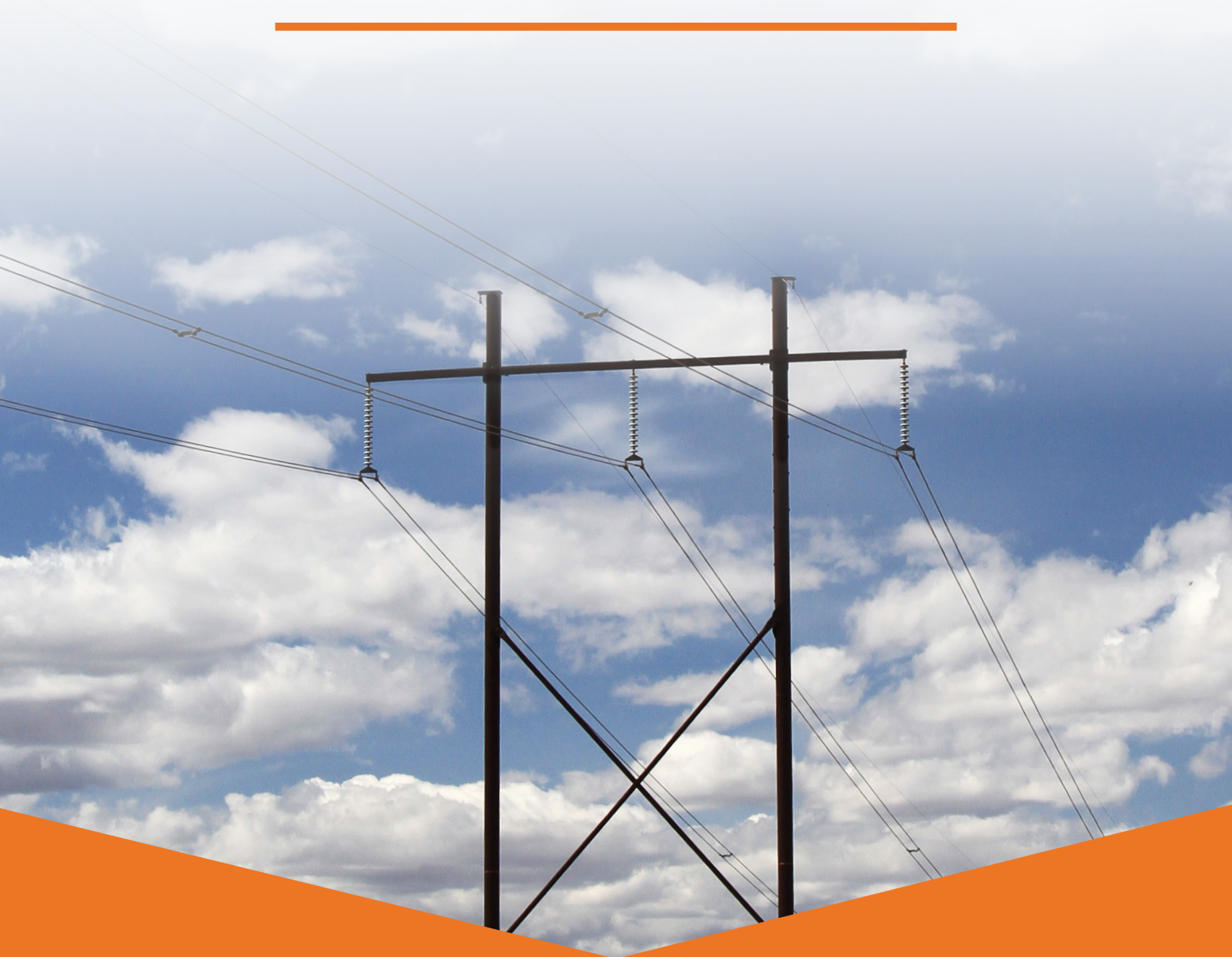


BEAUVAIL TO ILE-A-LA-CROSSE

POWER LINE REBUILD PROJECT



ABOUT THE PROJECT

SaskPower is rebuilding a power line that serves the Beauval and Ile-a-La-Crosse areas. The current line, which is about 64 kilometres long, is near the end of its life. Rebuilding it supports our commitment to ensuring reliable and cost-effective power for our customers and the communities we serve.

The new 138-kilovolt (kV) transmission line (operating at 72 kV) will be strung on H-frame, self-weathering steel structures that will be built within a new right-of-way, which will be 35 to 40 metres wide. Once the new power line is built and energized, we will salvage the old one.

Construction for the project is expected to be completed by December 2026.

WHAT TO EXPECT

Building this new infrastructure means that we'll need to secure easements for a new, offset right-of-way. Where possible we plan to build the new power line adjacent to the existing one.

WHAT WE'VE DONE SO FAR

In 2023, we reached out to Rightsholders, landowners and other stakeholders in the area for input on how we could reduce the impacts of our work. Using their feedback and our routing criteria, we developed a final plan for the new power line. Thank you to everyone who took time to meet, email, or call us about the project so far.

We will continue to provide opportunities for you to share input with us throughout the construction of this project.

WHAT ABOUT THE ENVIRONMENT?

What we do today impacts our future. Reducing our impact and protecting the environment is always a top priority for us.

As we plan projects, we use tools like databases, satellite imagery and field surveys to understand the environment we're working in.

As projects move forward, we will make sure environmental protection standards are in place to reduce our impact on features like:

- Waterbodies
- Sensitive lands
- Wildlife and their habitats
- Heritage resources

We also work with the Ministry of Environment and other regulatory agencies to ensure we meet all environmental requirements.

ABOUT LAND RIGHTS

Most of the power line will be located on Crown land administered by the Ministry of Environment. SaskPower will ensure proper authorizations are in place prior to construction and maintenance.

The anticipated 35 to 40-metre right-of-way for this power line is needed to ensure proper clearance for its construction, maintenance and operation. We also proactively monitor and remove vegetation around our power lines throughout the province to mitigate threats to public safety and service reliability.


PROJECT SCHEDULE

Consultation on route options	Complete
Easement acquisition	Complete
Vegetation Clearing Start	December 2024
Geotechnical Investigation	January 2025
Engineering/Design Completion	Spring 2025
Construction Start	September 2025
Projects in service	December 2026

HOW TO STAY IN TOUCH

Please call or email us to discuss:

For Stakeholder Engagement

 **1-833-233-3370**

 **PublicConsultation@saskpower.com**

For Indigenous Relations

 **1-306-240-5536**

 **IndigenousRelations@saskpower.com**

THINGS WE CONSIDER WHEN PLANNING A PROJECT



ENVIRONMENT:

We consider our potential impacts on many environmental aspects like designated lands, land cover, and heritage resources, as well as on sensitive plants, animals, and their habitats. When it's not possible to avoid these environmental features, we'll work with Rightsholders, stakeholders, and regulators to find the most responsible way to mitigate impacts. We follow SaskPower's Environmental Beneficial Management Practices.



INDIGENOUS KNOWLEDGE:

We engage Indigenous communities to seek invaluable knowledge. Local and Indigenous knowledge refers to the understandings, skills and philosophies developed by societies with long histories of interaction with their natural surroundings like hunting, fishing, trapping, ceremonial and spiritual uses.



LAND USE:

We recognize that land and resource use is important to agricultural operations, property owners, communities and resource users like hunters and trappers, commercial operators, nature, environmental organizations and the public. We consider how resources or access to resources may be affected as well as community land use plans and proximity to communities, residences, habitable buildings, outbuildings.



SOCIAL:

We consider the social value communities place on landscapes, points of interest, economic benefits to local communities, job opportunities and recreation activities.



TECHNICAL:

We consider engineering and construction standards as well as access, terrain, design, system reliability, proximity to required and other existing infrastructure. SaskPower is committed to ensuring public safety and safe access for construction and maintenance activities.



COST:

We consider capital costs (project budget), operating budget (long term maintenance), land acquisition costs and impact on power rates.



WHAT ARE WE MISSING?

Tell us in the feedback form provided.